

Spring
2018

Litchfield Legends

A publication of the Litchfield Park Historical Society and Museum

COLLECTIONS

The Heart of Every Museum

The reason for every museum in the world is the content of its collections. Who would ever enter the **Art Institute** in Chicago without seeing their collection of **Impressionists**; or travel to the Louvre without paying homage to the **Mona Lisa**, or to Madrid to see Picasso's **Guernica**? So it is with our own Litchfield Park Museum. Who has not stood in front of **Wally Denny's blimp and dirigible licenses** and not felt a shiver of connection to the past when noticing **Orville Wright's** signature on them? Or maybe you have looked at the enamel **Wingfoot plaque** hanging in our museum that once belonged to **Paul Weeks Litchfield**. He designed the **logo**; and it is still the logo used by the Goodyear Tire & Rubber Co. today. If you have ever gone out to PIR, we're certain that you noticed that very logo gracing the tires of the race cars. Those who have visited our museum know all about its history. Material culture is so valuable in connecting us to our past. There is an immediacy of delight and awe when one stands in the presence of an artifact that has survived the ages; and one knows that the object has passed through many hands on its way to that moment



in time when a visitor stands a few inches from it. Then when we hear the story of the individual(s) connected to each object, we expand the depth of our understanding of the history that has transpired before our brief time on earth.

Our museum has many treasures – some on exhibit and some in storage waiting for an appropriate time to put them on display. We thought you might like to view some of those objects. One such artifact is the **carriage** from The Wigwam. Most of us are familiar with that carriage since it stood in The Wigwam's south lobby for a number of years. The museum has a photo showing that carriage at *Rancho La Loma*

In This Issue:

- **COLLECTIONS, The Heart of Every Museum**
- **President's Letter**
- **Current Exhibits**
- **One Family's Treasure**
- **Collection Items**
- **Donate a Vehicle Program**
- **Sponsors**
- **Membership Form**

Continued on Page 6

Board of Directors

Executive Committee

Lisa Brainard-Watson, President
Nancy Schafer, Vice President
Meredeth Stucky, Secretary
Jeff Raible, Treasurer
Sonja Hendrick, Past President

Board Member Emeritus

Robert McMillan, DDS

Board Members

Larry Baker
Judy Cook
Paul Crawley
John Donahue
Judy Fulton
Lisa Hegarty
Sara Homan
Karen Krause
Linda Lamm
Sonia Rado
William Robey, MD
Ruben Rosales
Libby Hilton Rouse

General Counsel

Paul J. Faith, Esq.
Faith, Ledyard & Faith P.L.C.

Research Consultant

Dr. Gloria Cuadraz, ASU Office of Oral
History & Ethnography

Special Thanks

The City of Litchfield Park
Tim Blake, LandCare LLC
Palm Gate RV & Self Storage

Presidents Letter

So ... what is a museum?

Webster's Dictionary defines a museum as "a building or place where works of art, scientific specimens, or other objects of permanent value are kept and displayed." However, when you think about what a museum really is and does, it is so much more than just a place to keep and display objects of historical significance. For example, one of our most important tasks is collecting oral histories and gathering the stories behind the objects. Consider our exhibition, "*Los Campos de Litchfield Park – Revisited.*" While the photos and other ephemera are interesting, it is the stories behind them that are truly significant. Understanding the struggles, contributions, sacrifices, and achievements of the people who lived in the camps gives the items significance. Observing visitors interacting with the exhibition one sees that some are reflecting on their experiences, while other visitors are learning from their interaction with the exhibition. At a later point, a scholar researching a topic related to the subject might use the materials and the oral histories collected. And so, a museum is so much more than just a place to store and display materials ... it is a place to gather, remember, and reconnect, a place to learn from the experience of those who came before us, a place to celebrate the accomplishments and understand the connections that truly make us human.

We truly hope that you will take the time to visit our museum and that the objects and stories will speak to you.

Lisa Brainard-Watson
President, LPHS and MUSEUM

On view until mid-October at the MUSEUM

The First 100 Years of Litchfield Park—underwritten by Wilber E Kaufman

Los Campos de Litchfield Park—Revisited—underwritten by Ann Donahue Moore

One Family's Treasure

Recently, while sorting through their parents' house, the children of Jose and Amanda Corral found a framed program from the 1936 September 16th Fiesta in Litchfield Park. They immediately turned to each other and agreed that this treasure needed to be preserved at the Litchfield Park Historical Society and MUSEUM for future generations. So the group of them – Edward, Henry, Ernest, Joe, and sister Mary Ann – came to the museum early this year to donate their family treasure to us. It is now on display in the *Los Campos de Litchfield Park* exhibit.



Children of Jose and Amanda Corral
Henry, Ernest, Mary Ann, Eddie and Joe

Jose (Pepe) Corral was seven when his parents moved from Mexico to work at Goodyear Farms. When Jose grew up, he married Amanda Noriega in 1937; and together, they raised four sons in Camp 53. They left the camp in 1949 to move to Ray Sonora, Arizona, where Mary Anne and David were born. Ernest, Joe, and David all received college degrees. All of the children have now retired: Edward from Intel Corporation, Ernest

from Salt River Project, Henry from Kennecott Copper, and Joe played with the Phoenix Symphony for 40 years. The family is featured on the cover of our new book – “*Los Campos – The Camps of Litchfield Park – 1929-1986*” – by Cruz Pariga Dominguez and Belen Soto Moreno.

The September 16th Fiesta was held yearly at Goodyear Farms for the enjoyment of its Mexican-American employees. It was a celebration of Mexico's independence from Spain. In 1936, the Fiesta was held for two days – the 15th and 16th. There was a parade, music, dancing, speeches, reading of poetry, and a Fiesta Queen and Court. Goodyear Farms donated beef for the fiesta. It was cooked slowly underground on a mesquite fire until tender. The beef was enhanced with all sorts of food prepared by the women from the camps.

The LPHS and MUSEUM is proud to have this addition to our collections. We thank the Corral family members for their generosity in sharing this family treasure with visitors to our museum. Come and see it today!





1929 medal marking
the Ring Laying for a
Goodyear zeppelin
ZRS-4

Wally Denny's dirigible license

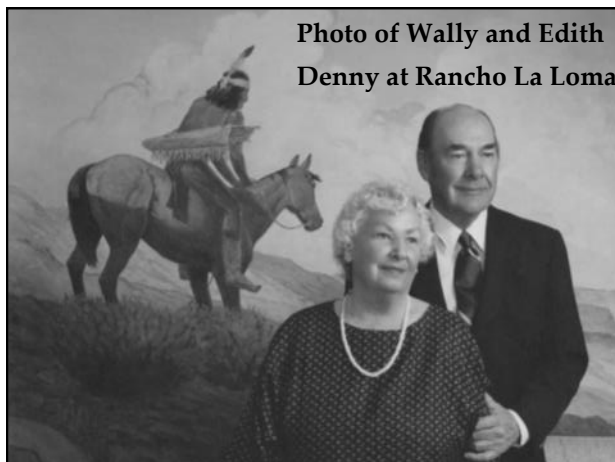
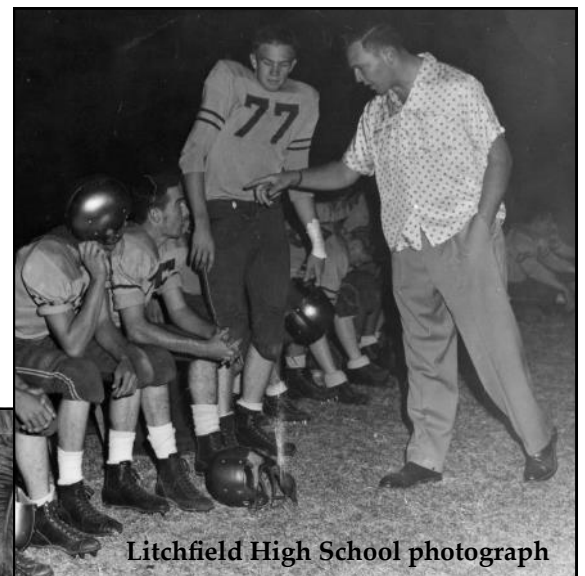


Photo of Wally and Edith
Denny at Rancho La Loma

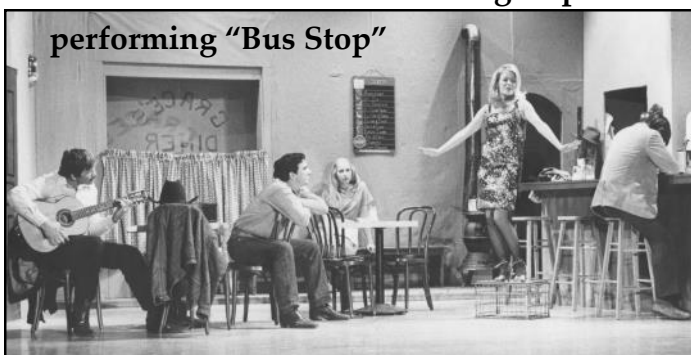


Litchfield High School photograph



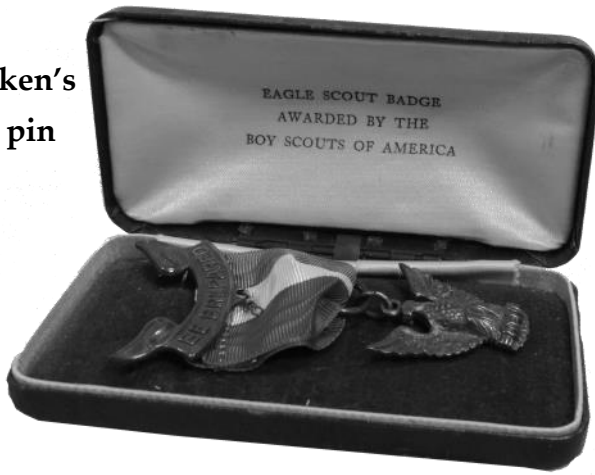
Rancho La
Loma photo

Photo of the CAS/West drama group
performing "Bus Stop"



Litchfield silver punchbowl

Bob McMicken's
Eagle Scout pin



"Bubble" granary construction photo

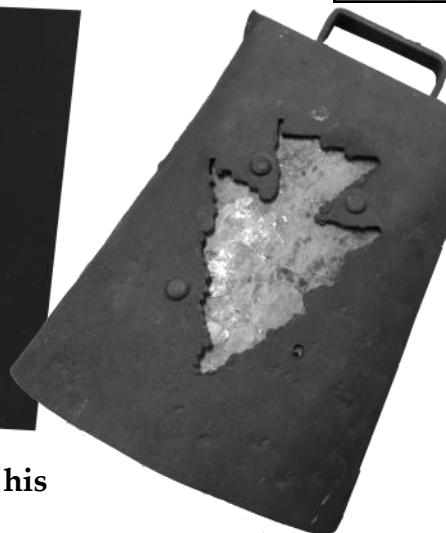


Litchfield Park aerial photo

Florence Litchfield's
evening purse



Ramon Soto and his
Goodyear Farms
service pins



Pedro Acuña family and the
cowbell light he made

during the 1940s/50s. We suspect it was used by visitors to The Wigwam to carry them to and from *La Loma* – or maybe out into the desert for a picnic. Given to the museum by The Wigwam, we now have it in storage, covered to protect it from dust, and awaiting a time when we can put it on display again.

One individual we talk about frequently at the museum is **Kenneth B. McMicken**, first cousin of Paul Litchfield and a driving force behind the Southwest Cotton Co. and Goodyear Farms. Kenneth McMicken had two sons – Bruce and **Bob**. We have several artifacts that once belonged to Bob. Having achieved Eagle Scout status, Bob served our country in the Army during WWII. When asked about her father, Margaret McMicken Bartol says – “*He was a cowboy.*” So among our



holdings are Bob’s spurs, cowboy hat, and a trophy he received in a Phoenix rodeo while riding his favorite horse *Dusty Boss*. We also have a photo of Bob showing a horse to the former Shah of Iran during the 1950s, as well as his Eagle Scout pin and a small New Testament inscribed by his father. Then there are the eight service pins that once belonged to **Ramon Soto**, Irrigation Foreman for Goodyear Farms. Dedicated to his work, Ramon

carefully saved each pin. It took forty years to accumulate the set – each one representing five years of devoted work for Goodyear Farms. Given to us by his daughter, Belen Soto Moreno, they are on continual display next to two photos of Ramon.

Who can overlook one of the *cowbell lights* designed and made by **Pedro Acuña**. Fashioned in the shape of a cowbell, the light has an opening on each side in the shape of a Native American arrowhead and filled in with mica. These lights still adorn The Wigwam, The Church at Litchfield Park, and the cottages at the top of the hill of the former *Rancho La Loma*. The cabinet that holds Acuña’s *cowbell light*, also holds what was once the treasure

of a small boy growing up on his father’s farm in Liberty, Arizona during the Great Depression. **Wilbur Kaufman** proudly turned over his small, red-metal toy tractor to us one day. Wilbur loved that tractor spending many growing-up hours playing with it; and carefully protecting it throughout his adult years. Now it is a delight for young boys who visit our museum who not only see the tractor, but two photos of the young boy who once played with it.



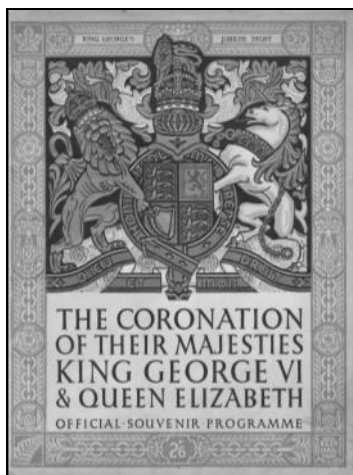
Some things we preserve are placed on view only occasionally due to their more fragile nature. One of those items is the program from the coronation of **King George VI**, father of Queen Elizabeth II. Paul Litchfield attended that coronation and the LPHS has now become the caretaker of the program he brought back from England. We also have a letter written to Paul Litchfield by Orville Wright thanking him for some rubber cushions Litchfield had specially made for him. These cushions made sitting more comfortable for Wright. He had been badly hurt in an air crash he had while demonstrating

Continued on page 7

Collections cont.

the plane he and his brother built; and Wright suffered continually from the pain from those injuries throughout his lifetime.

Our collections have grown dramatically over the past six years. Each photo and artifact is tied to a story about the



person who once owned it. While history certainly has many events and dates woven through it, the docents at our museum are mindful of telling the stories of the individuals who once owned the artifacts and photos on display. We relate their human experiences – tales of meaningful and productive lives filled with both hope and challenge – and

as varied as the leaves on trees. While each life is unique, visitors immediately relate to those human stories – tales not so different from their own – only experienced by a person from a different time and place in the history of mankind.

Help keep the wheels turning



at our MUSEUM

Donate your unwanted Car, Truck, Trailer, RV, Motorcycle, Off-Road Vehicle or Heavy Equipment — **Running or Not!**

The Litchfield Park Historical Society and MUSEUM, in partnership with CARSTM, will sell your vehicle and you will receive a tax deductible receipt. For more information call : 844-569-GIVE (844-569-4483) or visit our website at: LitchfieldParkHistoricalSociety.org

Sponsors

\$500 Level



La Loma Village
Sun Health

14154 Denny Boulevard
Litchfield Park, AZ 85340



S&S Tire & Auto Service Center
800 N. Dysart, Goodyear, AZ 85338



WIGWAM
ARIZONA

300 E. Wigwam Blvd., Litchfield Park, AZ
www.wigwamresort.com

\$250 Level

Mary Cavanaugh-Marsh,
Financial Adviser, EDWARD JONES

Estrella Rotary Club

\$100 Level

Larry Baker, Sparklin' Clean Carwash

Paul J. Faith, Esq., Faith, Ledyard & Faith, P.L.C.

Victor Fierros, Jewelry by Victor

Rick Hughes, Haircutters in the Park

Peter Mahoney, Park Café and Old Pueblo Café

John Manobianco, State Farm Insurance

Margie Martinez, La Loma Mexican Grille

Mickey Ollson, Wildlife World Zoo and Aquarium



PO Box 1936
Litchfield Park, Arizona 85340

Location Address: 13912 W Camelback Rd.

Email: office@LPHSMuseum.org
www.LPHSMuseum.org



NONPROFIT
ORGANIZATION
U.S. POSTAGE
PAID
PERMIT NO. 15

Do you have empty aluminum cans?

The LPHS will recycle them for you. Leave them at the garage door of 610 N. Old Litchfield Road, Litchfield Park. The money will help the LPHS pay its utility bills.

***Aluminum only. No tin cans please.**



Join Us. It is through your dues and donations that we are able to continue our efforts to preserve the history of Litchfield Park. *Become a member today.*

LPHS 2018 Membership/Special Donation Form

January 1 – December 31, 2018 membership year

Name _____ Spouse's Name _____

Mailing Address _____

City _____ State _____ Zip _____

Phone _____ Email _____

Annual Membership Dues ☐ Single Adult \$20 ☐ Family \$30 ☐ Business/Professional \$60
☐ Contributor \$125 ☐ Lifetime \$600

I would like to make an additional Special Donation of: ☐ \$25 ☐ \$50 ☐ \$100 ☐ Other _____

Thank you! Please make your check payable to: **Litchfield Park Historical Society**
PO Box 1936, Litchfield Park, AZ 85340

Would you be interested in volunteering for our organization? ☐ Yes

The Litchfield Park Historical Society is an official IRS 501 (c)(3) non-profit corporation, and membership dues and other donations are tax deductible for persons who itemize.